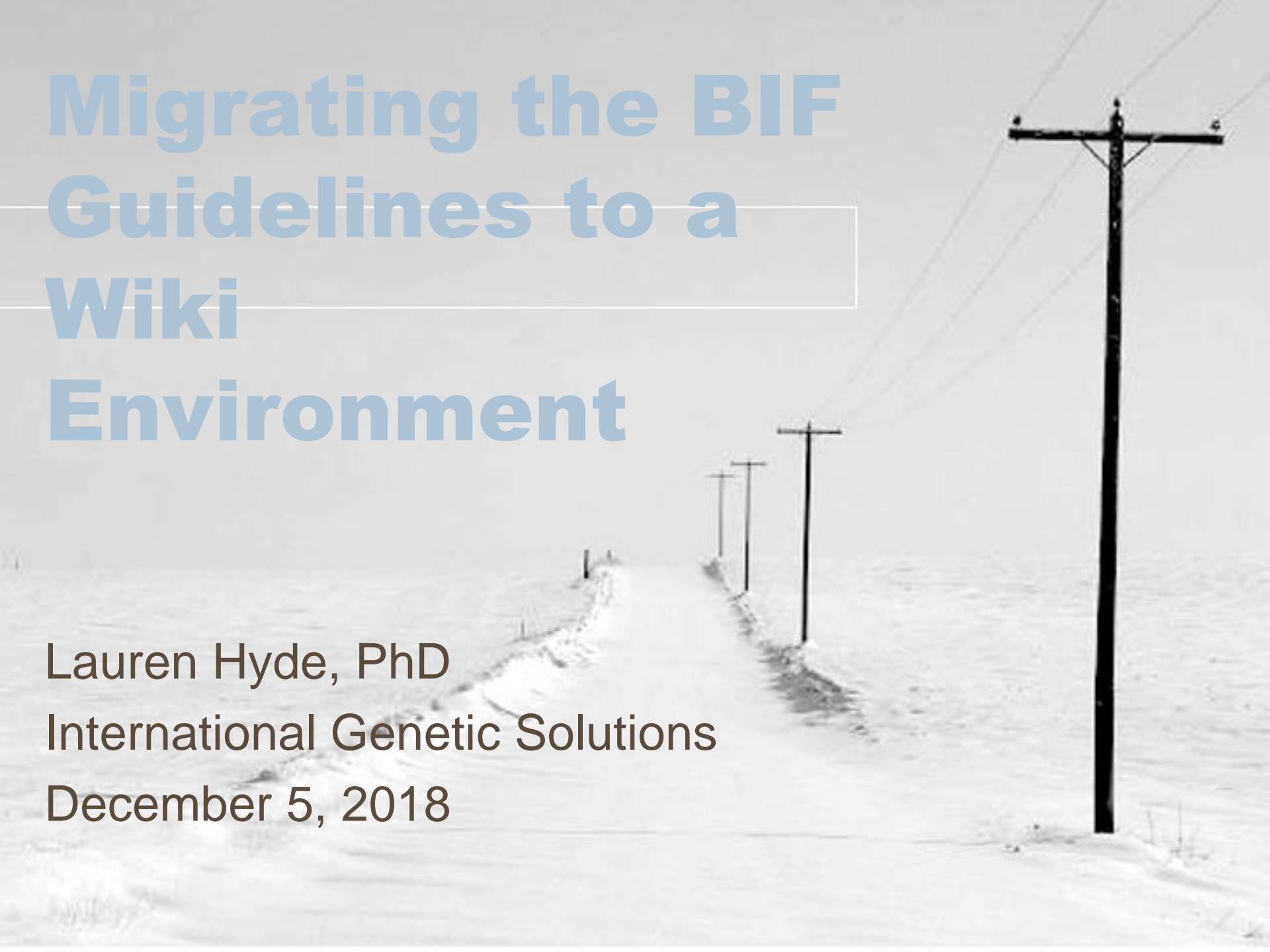


# Migrating the BIF Guidelines to a Wiki Environment

Lauren Hyde, PhD  
International Genetic Solutions  
December 5, 2018



# Background

- Formed guidelines revision committee in 2017
  - Lauren Hyde, chair
  - Donnell Brown
  - Darrh Bullock
  - Kajal Devani
  - John Genho
  - Lee Leachman
  - Dan Moser
  - Mark Thallman
  - Bob Weaber
  - Robert Williams



# Background

- Wanted to move away from a book format or PDF so that guidelines could be more easily updated
- Considered one-page fact sheets
- Bruce Golden suggested putting it into a wiki format
- Committee brought this to BIF board on June 20, 2018
- Board approved wiki format and formation of editorial committee



# Guidelines Editorial Drafting Committee

- Lauren Hyde, lead coordinator
- Bruce Golden, tech coordinator
- Darrh Bullock
- Dan Moser
- Dave Schafer
- Warren Snelling
- Matt Spangler



# What is a Wiki?

- A wiki is a website on which users collaboratively modify content and structure directly from the web browser.
  - Source: Wikipedia



# Advantages of a Wiki Environment

- Free (or at least very cheap)
- No programming skills required
- Access by anyone from anywhere
- Collaborative, community effort
- Instantaneous—no need to wait for publisher
- Encourages non-technical users to publish
- Connects multiple resources (linked web pages)



# Disadvantages of a Wiki Environment

- Anyone can edit, but able to restrict user access
- Open to spam and vandalism (without proper management), but easy to restore pages
- Requires Internet connectivity
- Flexible structure can become disorganized, but community can monitor at regular intervals



# Production Wiki

- [guidelines.thetasolutionsllc.com/index.php/Main\\_Page](http://guidelines.thetasolutionsllc.com/index.php/Main_Page)





# Navigation

- BIF Basics
- Data Collection and Utilization
- Data Processing
- Genetic Evaluation
- Selection and Mating
- Useful Pages
  - Glossary
  - Essential Reading
  - Authors' Resources



# Interested in Becoming Part of the Community?

- Easy to learn, easy to use
- Get credit for your contributions
- Check out Authors' Resources
- Contact Lauren Hyde
  - [lhyde@simmgene.com](mailto:lhyde@simmgene.com)
  - (303)717-0216



