



OUR FARM

Our farm is located in east central Alberta, about two hours east of Edmonton, where we raise beef cattle, sheep, pigs, chickens, turkeys, ducks, and geese as well as grow cereal and legume crops on more than 2,500 acres of beautiful rolling parkland.

We have a passion for raising sustainable, ethical, and quality beef, lamb, poultry, eggs, grains, and soon to be pork.

FARM TO TABLE

LOCAL & CITY DELIVERIES | ON-FARM PICKUP | CONSIGNMENT SHOPS





FARM PROGRAMS

On-farm events

Community partnerships

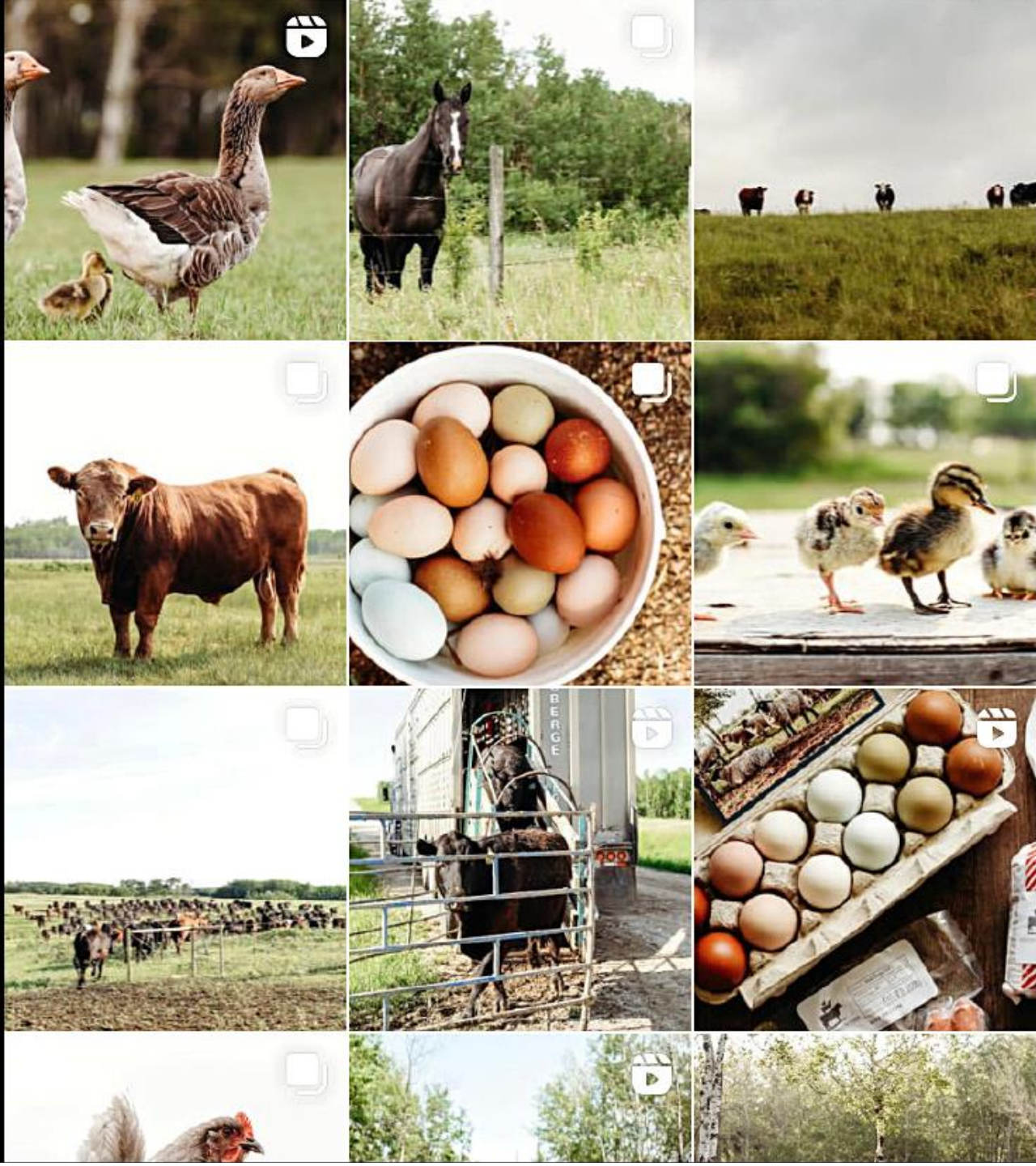
Restaurants

Cooking classes

Industry articles

Virtual & in-person school tours





FOLLOW US

WEBSITE

chatsworthfarm.ca

EMAIL ADDRESS

chatsworthfarm1@gmail.com



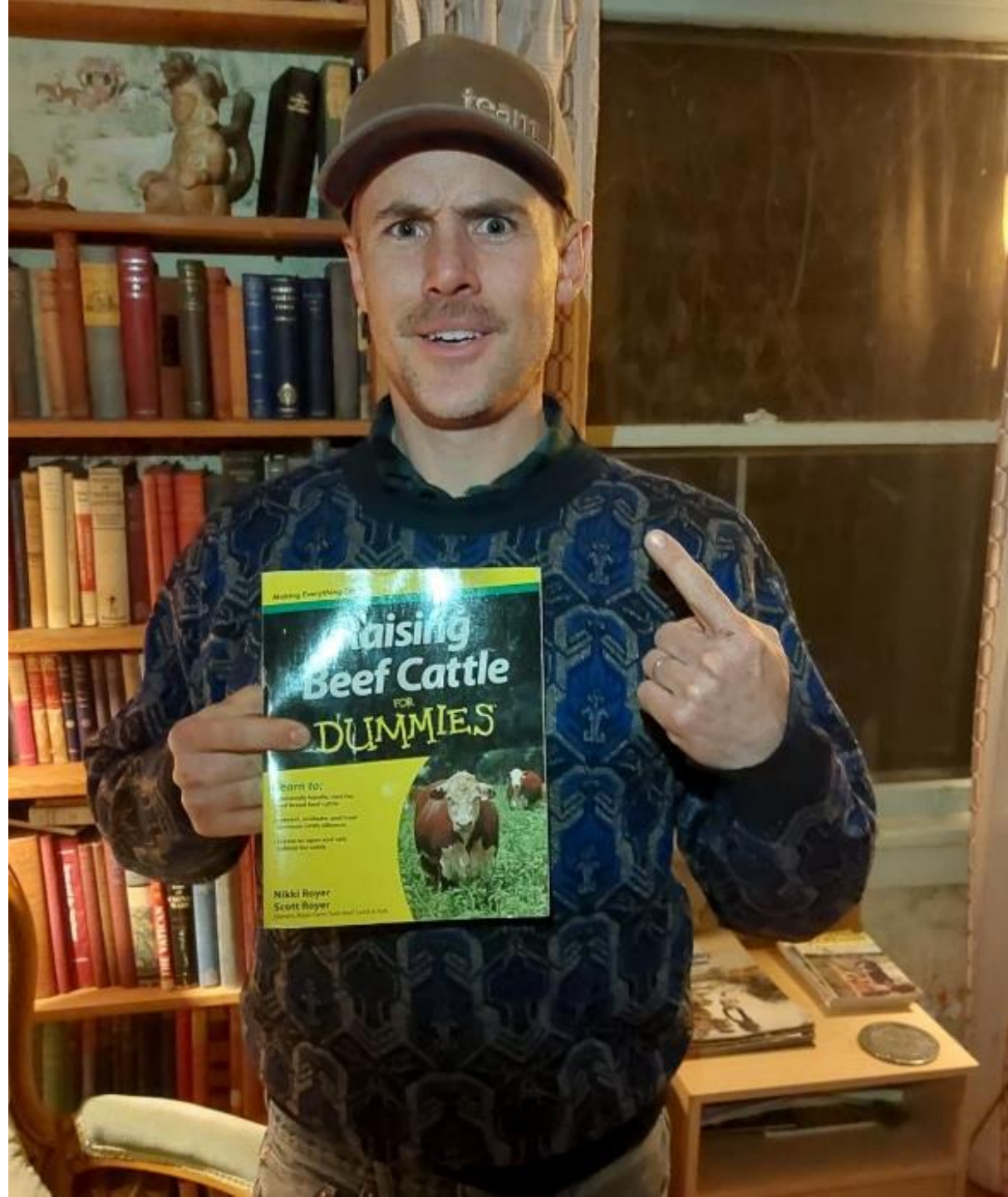


BEN CAMPBELL

TULLICHEWAN RANCH



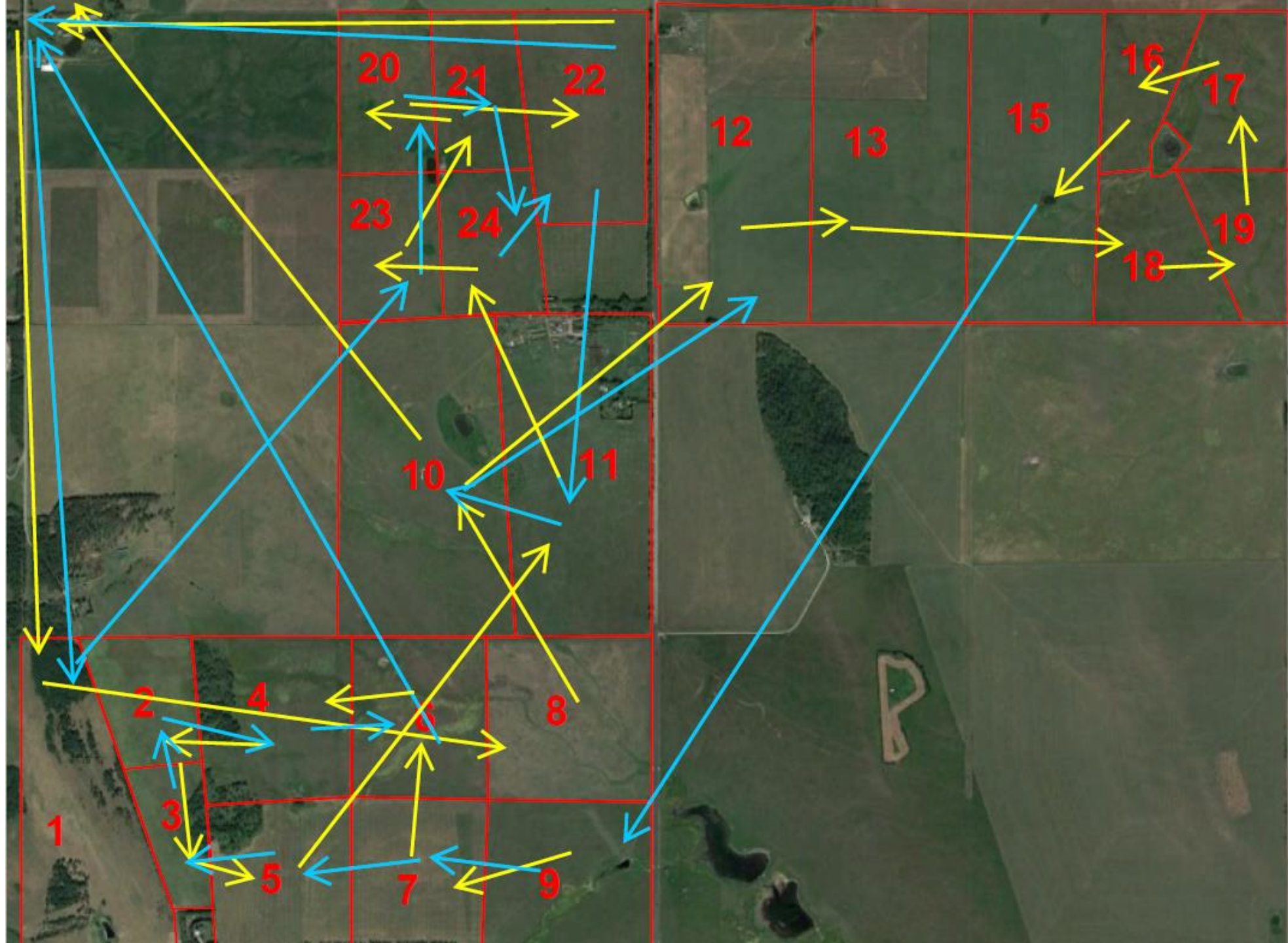








Field Name	Date In	Date Out	Acres	Days/Acre	Date In	Date Out	Acres	Days/Acre	\$	\$	2021 AUD	2020 AUD	2019 AUD
1	8-Jun-21	12-Jun-21	52	23			52	0	\$ 823	\$ 823	23	29	22
2	30-Apr-21	3-May-21	21	40	5-Aug-21	8-Aug-21	21	35	\$ 1,132	\$ 1,132	75	18	15
3	3-May-21	6-May-21	14	60	3-Aug-21	5-Aug-21	14	53	\$ 1,132	\$ 1,132	112	27	30
4	28-Apr-21	30-Apr-21	26	21	8-Aug-21	12-Aug-21	26	45	\$ 1,235	\$ 1,235	66	19	16
5	6-May-21	11-May-21	27	52	30-Jul-21	3-Aug-21	27	44	\$ 1,852	\$ 1,852	95	28	70
6	25-Apr-21	28-Apr-21	39	21	12-Aug-21	15-Aug-21	39	23	\$ 1,235	\$ -	43	32	0
7	19-Apr-21	25-Apr-21	38	42	27-Jul-21	30-Jul-21	38	23	\$ 1,852	\$ -	65	26	0
8	12-Jun-21	16-Jun-21	44	27			44	0	\$ 823	\$ -	27	74	0
9	13-Apr-21	19-Apr-21	40	40	24-Jul-21	27-Jul-21	40	22	\$ 1,852	\$ -	62	38	0
10	16-Jun-21	23-Jun-21	78	24	8-Sep-21	13-Sep-21	78	19	\$ 2,470	\$ -	43	22	0
11	11-May-21	15-May-21	53	22	4-Sep-21	8-Sep-21	53	22	\$ 1,646	\$ -	44	33	24
12	23-Jun-21	28-Jun-21	75	20	6-Sep-21	17-Sep-21	75	42	\$ 3,293	\$ -	62	50	58
13	28-Jun-21	3-Jul-21	75	20	17-Sep-21	28-Sep-21	75	42	\$ 3,293	\$ -	61		
15	17-Jul-21	24-Jul-21	64	32			64	0	\$ 1,441	\$ -	32	70	53
16	14-Jul-21	17-Jul-21	20	44			20	0	\$ 617	\$ -	44	50	70
17	10-Jul-21	14-Jul-21	25	47			25	0	\$ 823	\$ -	47	40	68
18	3-Jul-21	7-Jul-21	28	42			28	0	\$ 823	\$ -	42	45	68
19	7-Jul-21	10-Jul-21	21	42			21	0	\$ 617	\$ -	42	48	70
20	21-May-21	23-May-21	24	25	28-Sep-21	30-Sep-21	24	25	\$ 1,000	\$ 1,000	49	21	44
21	19-May-21	21-May-21	25	24	4-Sep-21	6-Sep-21	25	24	\$ 1,000	\$ 1,000	47	20	42
22	23-May-21	26-May-21	43	21	2-Oct-21	4-Oct-21	43	14	\$ 1,250	\$ 1,250	34	35	0
23	17-May-21	19-May-21	24	25	30-Sep-21	2-Oct-21	24	25	\$ 1,000	\$ 1,000	49	21	51
24	15-May-21	17-May-21	24	25	2-Sep-21	4-Sep-21	24	25	\$ 1,000	\$ 1,000	49	21	59
Teskey			26	0	23-Aug-21	29-Aug-21	26	68	\$ 1,499	\$ 1,499	68	17	19
B			22	0			22	0	\$ -	\$ -	0	21	23
Hill	30-May-21	3-Jun-21	70	17	19-Aug-21	23-Aug-21	70	17	\$ 1,646	\$ 1,646	34	44	8
Centre	28-May-21	30-May-21	35	17	17-Aug-21	19-Aug-21	35	17	\$ 823	\$ 823	34	57	45
East	26-May-21	28-May-21	34	17	15-Aug-21	17-Aug-21	34	17	\$ 823	\$ 823	35	51	56
West	3-Jun-21	6-Jun-21	18	44	29-Aug-21	31-Aug-21	18	33	\$ 1,029	\$ 1,029	77	111	35
Chris	6-Jun-21	8-Jun-21	20	27	31-Aug-21	2-Sep-21	40	15	\$ 1,000	\$ 1,000	41		













JEFFREY FITZPATRICK-STILWELL
DEAL MAKER



Toronto, ON



GUARDIANS OF THE GRASSLANDS



A mainspring PRODUCTION

SOMETIMES WHAT YOU THINK IS THE PROBLEM IS REALLY THE SOLUTION

Ranching by the numbers: Beef, benchmarking and balance

51 min listen

Share



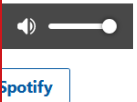
How does an engineering degree help you raise grass-fed beef? For Ben Campbell, of [Grazed Right Ranch](#), his unconventional path to agriculture was informed by the critical thinking and problem-solving he learned at school.

In this episode of the FCC Knowledge podcast: Talking Farm and Food, Marty and Ben talk about using your numbers and how benchmarking and ongoing learning informs decision-making and helps Ben achieve balance.

WORKING WITH CANADA TO BUILD A MORE SUSTAINABLE



The cover of Alberta Beef Magazine, Vol. 31 No. 6 June/July 2021. It features a family photo of Ben and Steph Campbell and their four children in a field. The headline reads 'The Campbells New to Ranching...'. A 'UNION FORAGE' advertisement is at the top, and an Xplornet advertisement is at the bottom.



An advertisement for McDonald's featuring Ben and Steph Campbell, ranchers from Black Diamond, AB. They are shown in a field, with Ben wearing a cowboy hat. The text says 'Proud sponsor of the Calgary Stampede' and 'Ben and Steph Campbell Ranchers, Black Diamond, AB'. The McDonald's logo is in the top right corner.



GRANDVIEW FARMS

BEEF IMPROVEMENT FEDERATION RESEARCH
SYMPOSIUM AND CONVENTION

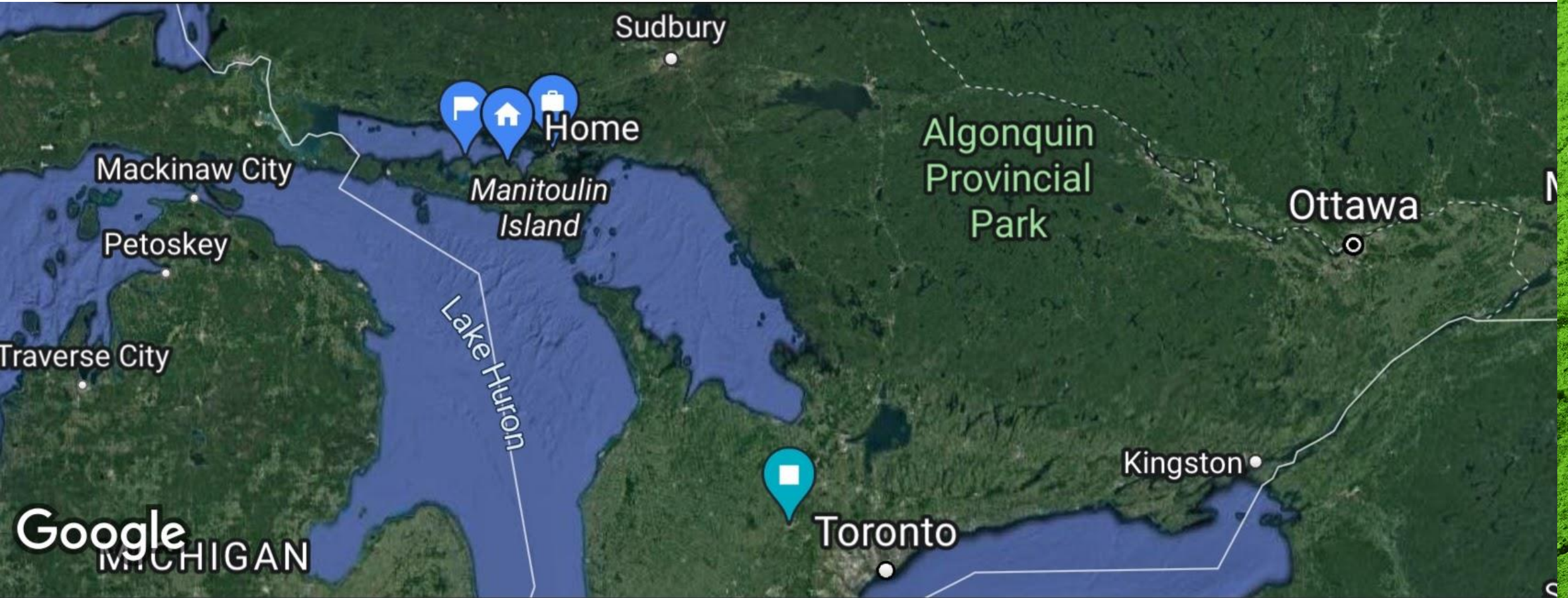
YOUNG PRODUCER SYMPOSIUM

Presented by:

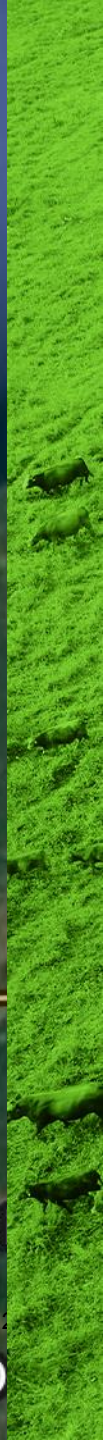
BFO BOARD DIRECTOR - JORDAN MILLER
GRANDVIEW FARMS



SOUTHERN ONTARIO



ON BARRIE ISLAND



LIFE ON MANITOULIN ISLAND





96 Posts 567 Followers 332 Following

grandview farms

Product/service

- ✦ Quality beef from Manitoulin Island
 - ✦ forage developed + barley finished... more
- www.grandviewmanitoulin.com/

Professional dashboard

New tools are now available.

Edit profile

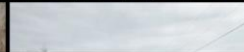
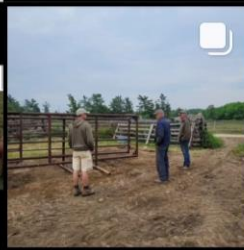
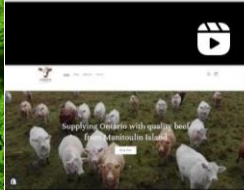
Share profile



acknowledge...



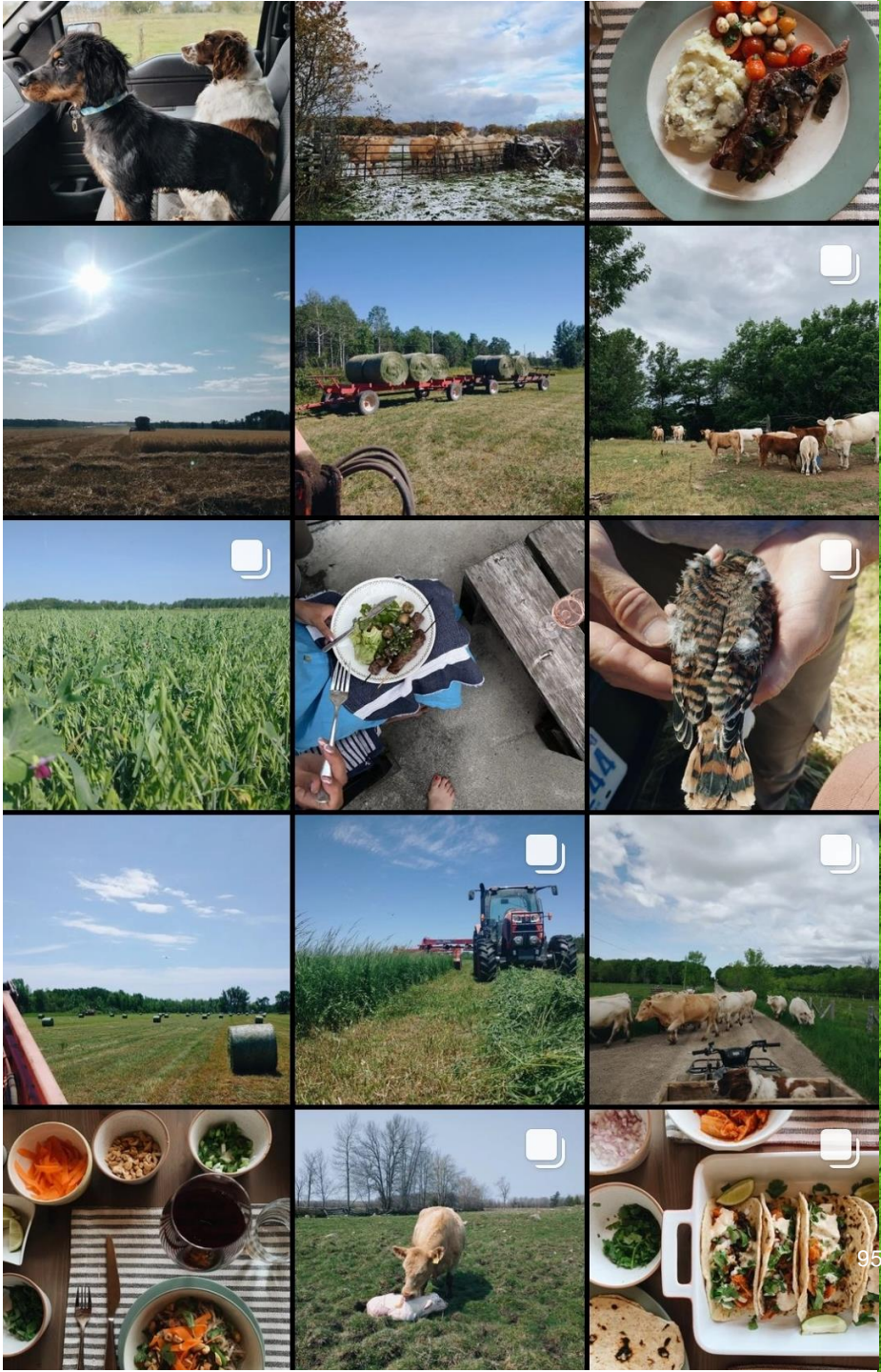
New



GRANDVIEW FARMS ON INSTAGRAM

GRANDVIEW FARMS

ON INSTAGRAM





GRANDVIEW FARMS

MEETING OF THE MINDS



[Home](#) [Shop](#) [About us](#) [Contact](#)



Supplying Ontario with quality beef from Manitoulin Island

[Shop Now](#)





Grandview Farms

We are a 6th generation, family owned and operated, beef farm on Western Manitoulin Island. 100% of the beef we sell is from our herd here on the land we are so fortunate to work with. We believe that "sustainability" is driven by honoring successes of the past, while improving our operations at every opportunity.



THANK YOU

